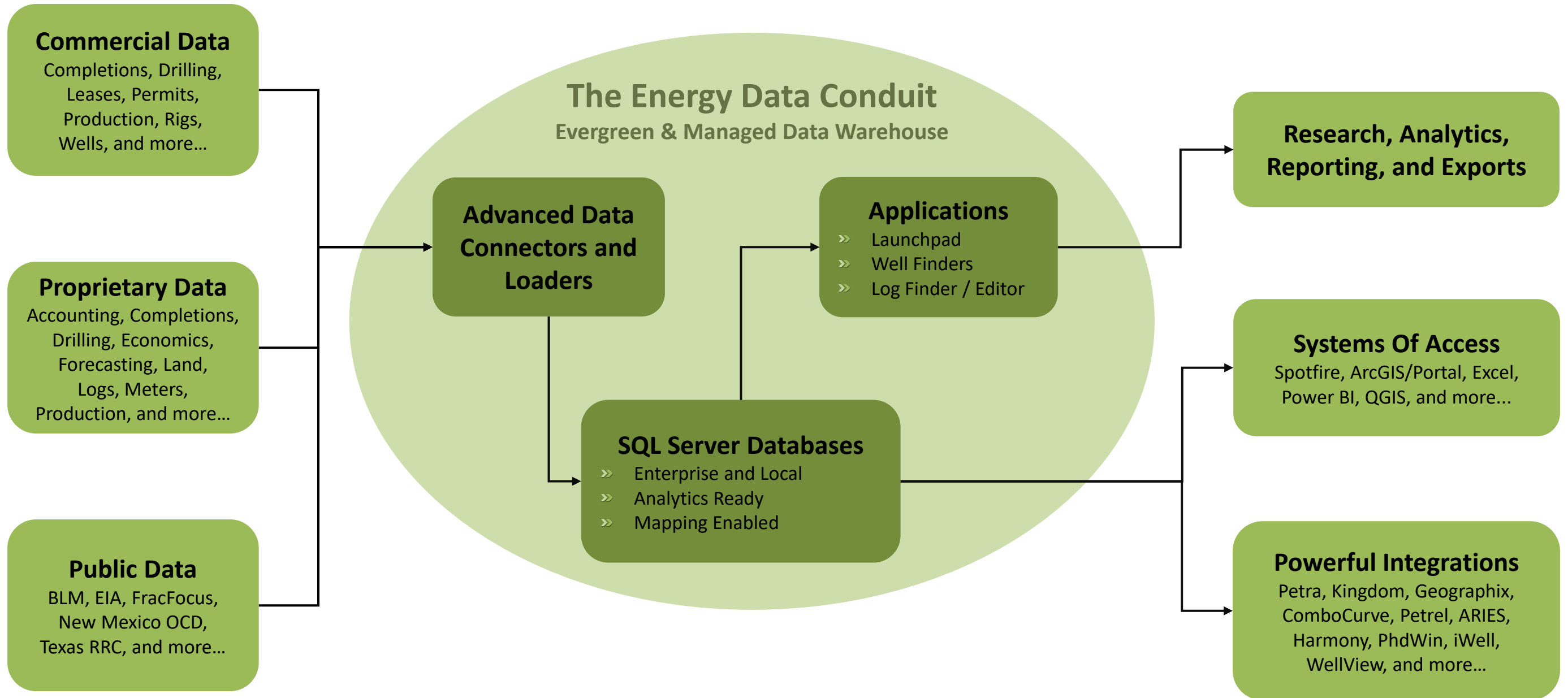




THE ENERGY DATA CONDUIT

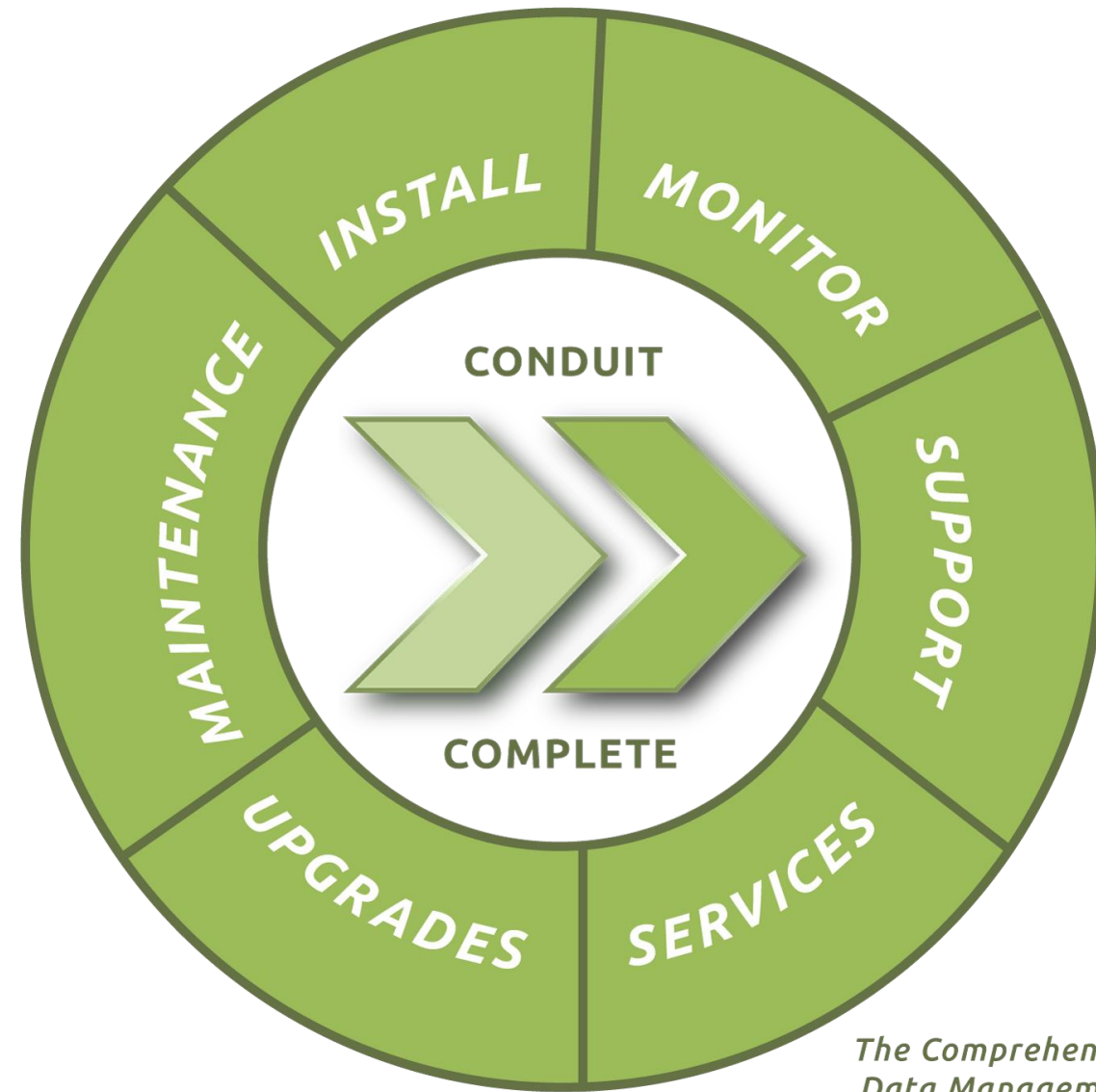
www.conduitresources.com

The Energy Data Conduit Platform



WELCOME TO THE ENERGY DATA CONDUIT

Conduit Resources provides relevant data management software and analytics solutions for the energy industry. Our Products enable oil and gas industry leaders to explore data trends from all available data sources, including Commercial, Public, and Private sources, all while improving operational decisions. The Conduit empowers your workforce with evergreen access to company proprietary and subscription data on your network, fully integrated with your systems. Conduit Resources is a dynamic company gaining a reputation for excellence in energy data management with a rapidly growing market share.



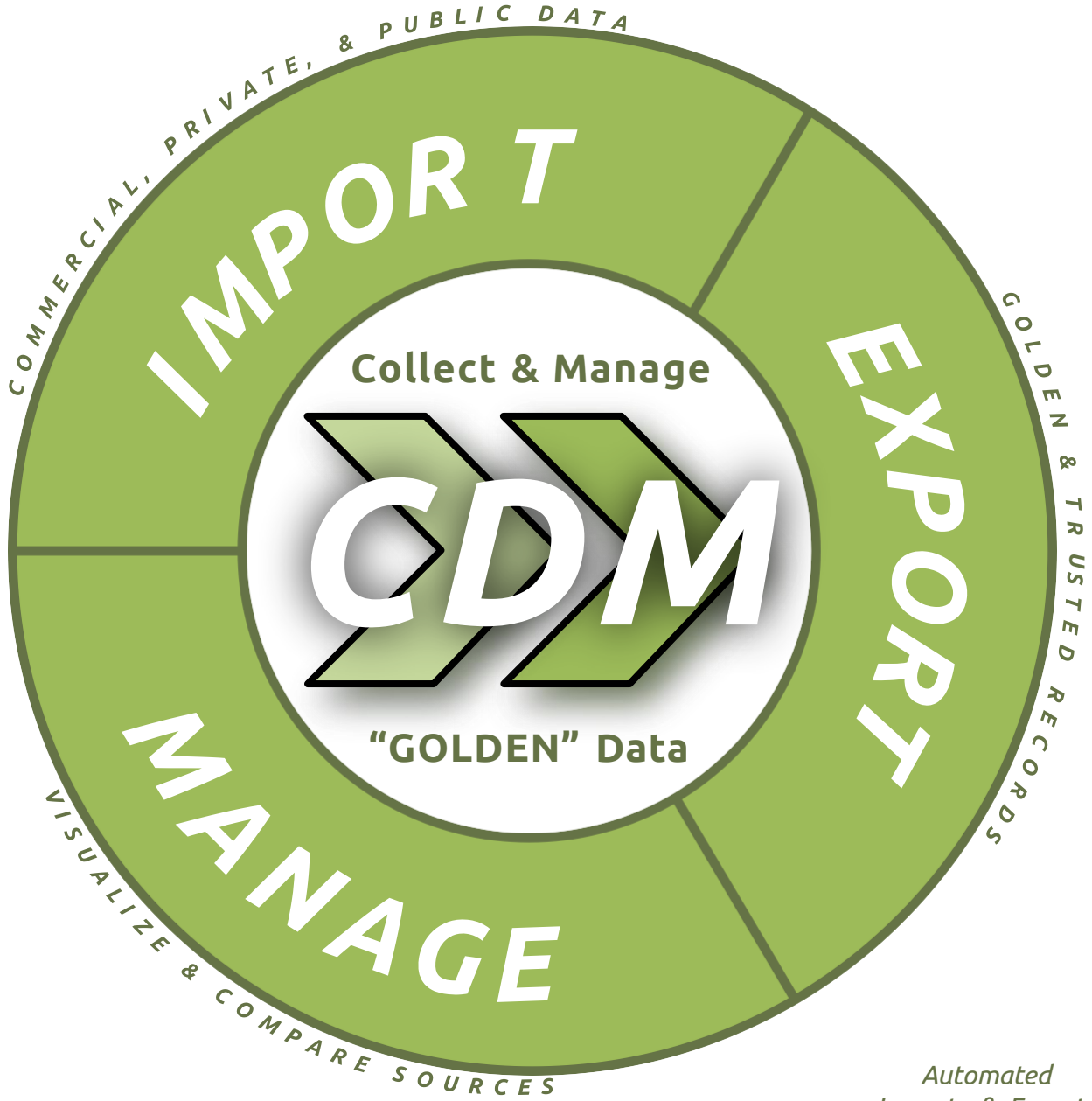
*The Comprehensive
Data Management
Subscription*

Data Warehousing for all your Critical Data Sources!

THE CONDUIT DATA MANAGER

Get Your Golden Records

Conduit Resources is excited to announce our newest data management product. The Conduit Data Manager (CDM), a data management solution that maintains specific record attributes from multiple data sources in a focused and useable manner guaranteed to fit your budget.



Automated Imports & Exports

Conduit Data Manager

File About

Master Data

Grouped by: Group Key

| Group Key | Provider | Item Key | UWI | Well Name | Basin | Surface Lat | Surface Lon | Current Operator | Hole Direction |
|----------------|-----------|----------------|----------------|----------------------------|-----------------|-------------|-------------|--------------------------|----------------|
| 30005000480000 | | | | | | | | | |
| 30005000480000 | Golden * | 30005000480000 | 30005000480000 | PRE-ONGARD WELL #002 | NORTHWEST SHELF | 33.447014 | -104.439796 | PRE-ONGARD WELL OPERATOR | VERTICAL |
| 30005000480000 | OCD | 30005000480000 | | PRE-ONGARD WELL #002 | | 33.447014 | -104.439796 | | |
| 30005000480000 | DI | 30005000480000 | 30005000480000 | CHILDRESS 002 | NORTHWEST SHELF | 33.447014 | -104.439796 | PRE-ONGARD WELL OPERATOR | VERTICAL |
| 30005000490000 | | | | | | | | | |
| 30005000490000 | Golden * | 30005000490000 | 30005000490000 | PRE-ONGARD WELL #001 | PERMIAN BASIN | 33.436825 | -104.450272 | PRE-ONGARD WELL OPERATOR | VERTICAL |
| 30005000490000 | Overrides | 30005000490000 | 30005000490000 | | PERMIAN BASIN | | | | |
| 30005000490000 | OCD | 30005000490000 | | PRE-ONGARD WELL #001 | | 33.436825 | -104.450272 | | |
| 30005000490000 | DI | 30005000490000 | 30005000490000 | JESS FEDERAL 002 | NORTHWEST SHELF | 33.436825 | -104.450272 | PRE-ONGARD WELL OPERATOR | VERTICAL |
| 30015209950000 | | | | | | | | | |
| 30015209950000 | Golden * | 30015209950000 | 30015209950000 | FRANKLIN ETAL FEDERAL #001 | DELAWARE | 32.226318 | -104.504349 | FINLEY RESOURCES | VERTICAL |
| 30015209950000 | OCD | 30015209950000 | | FRANKLIN ETAL FEDERAL #001 | | 32.226318 | -104.504349 | | VERTICAL |
| 30015209950000 | DI | 30015209950000 | 30015209950000 | FRANKLIN ETAL FEDERAL 001 | DELAWARE | 32.226318 | -104.504349 | FINLEY RESOURCES | DIRECTIONAL |

Items: 10 Filtered: 10 Excluded: 0 Deleting: 0

State Web

https://www.wps.emrd.nm.gov/ocd/ocdpermitting/Data/WellDetails.aspx?api=30-005-00048

Well Logs Prod Docs Map

SIGN-IN HELP

Searches Operator Data Hearing Fee Application

OCD Permitting

Home Searches Wells Well Details

30-005-00048 PRE-ONGARD WELL #002 [30041]

General Well Information

| | | | |
|------------|-----------------------------------|----------------|---------|
| Operator: | (214263) PRE-ONGARD WELL OPERATOR | Direction: | |
| Status: | Plugged, Site Released | Multi-Lateral: | No |
| Well Type: | Oil | Mineral Owner: | Private |
| Work Type: | New | Surface Owner: | Private |

Quick Links

- General Well Information
- History
- Comments
- Operator %
- Pits
- Casing

API Number

THE ENERGY DATA CONDUIT

Conduit Software

- Conduit Data Manager
- Conduit Well Log Registry

Conduit Public

- BLM
- EIA
- Frac Focus
- New Mexico OCD
- Texas RRC

Conduit Commercial

- Enverus
- Enverus DrillingInfo
- Enverus Rig Data
- Enverus RS Data
- IHS
- IHS DNA
- IHS Land
- JKPC
- Oseberg
- P2 Tobin
- PDS Frac X
- Platts Dimensions
- Quandl
- TGS

Conduit Markets

- AGSI
- Argus
- CME Group
- Criterion
- CWG
- EOX Live
- Genscape
- ICE
- IIR
- Marex
- NE2 Group
- NGI
- NGX
- OilX
- OPIS
- ParagonHDS
- Platts
- Point Logic
- Super Derivatives

Conduit Private

- ComboCurve
- Epic Lift
- GreaseBook
- inSpatial
- iWell
- Ogsys
- P2 Bolo
- P2 Excalibur
- P2 iLandMan
- P2 Merrick
- ProdMan
- Prodview
- Smartsheet
- Spectraseis
- WellEz
- WellView
- Whitson
- zdSCADA



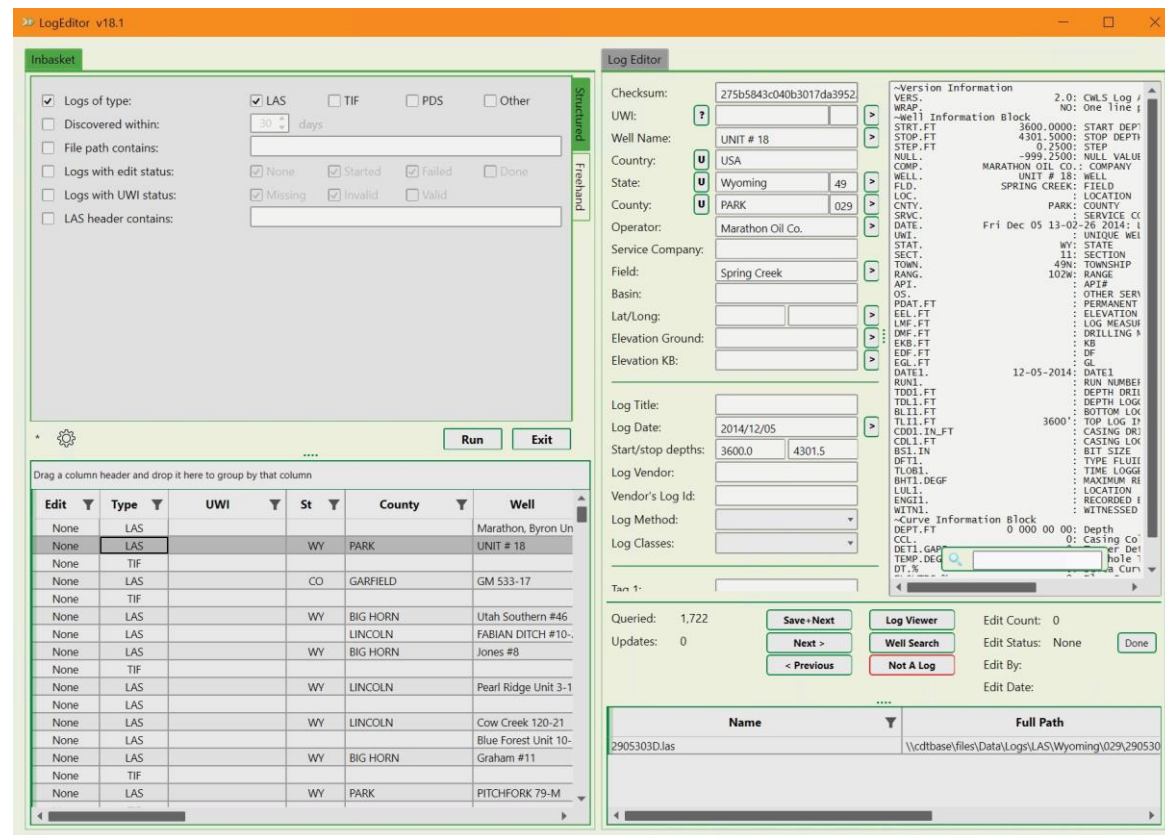
WELL LOG REGISTRY

A FULL SUITE OF TOOLS FOR WELL LOG MANAGEMENT

SuperFind - A powerful file directory scanning utility customizable for any network

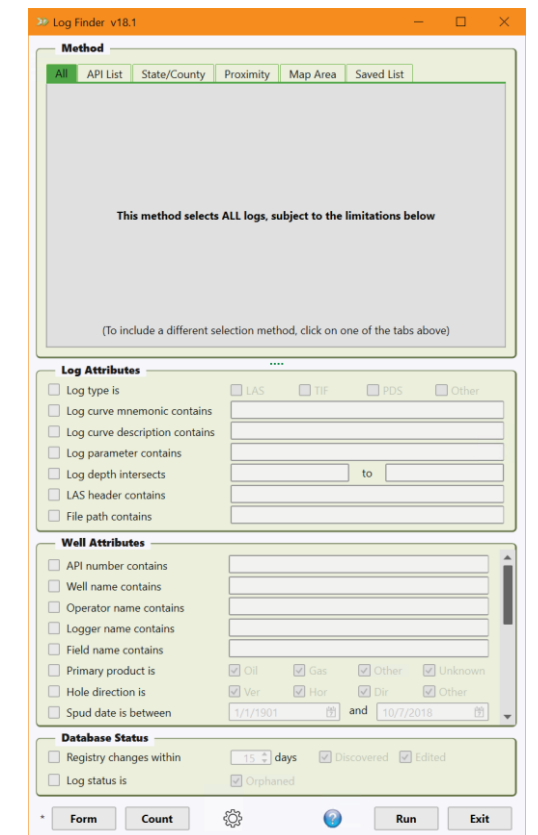
Well Log Editor - Intuitive and simple editing & management of well logs

Well Log Query - Fast and local log query tool



WHAT IT DOES / HOW IT WORKS

- Using a network crawler, the solution finds all of your digital and raster logs, including; .las, .tif, PDS, etc.
- The program catalogues well log digital curve data and parses all the header information into a proprietary SQL Server database on your local network
- A friendly user interface and admin module gives you access to logs and the ability to manage them





www.conduitresources.com

Sales

Sales@ConduitResources.com

Support

Support@ConduitResources.com

