

The background image shows an industrial oil field scene. In the foreground, there are numerous red pipes and machinery, likely part of a hydraulic fracturing (fracking) operation. The pipes are arranged in rows, leading towards the background. In the background, there are drilling rigs and cranes under a cloudy sky. The overall scene is industrial and suggests a focus on oil and gas production.

Driving Reservoir Growth & Innovation

Stephen R. Ingram

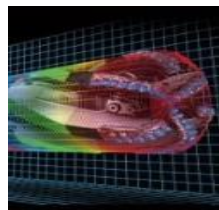
HALLIBURTON

HALLIBURTON

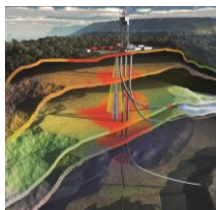
Drilling and Evaluation



Baroid



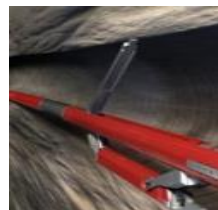
**Drill Bits
& Services**



**Sperry
Drilling**



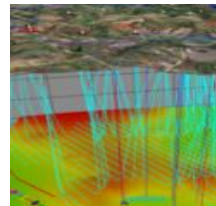
**Testing
& Subsea**



**Wireline &
Perforating**

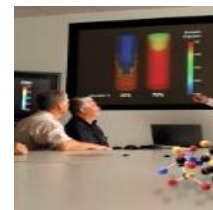


**Consulting
& Project
Management**

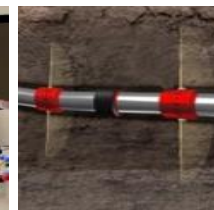


Landmark

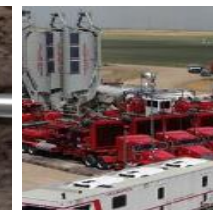
Completion and Production



Cementing



**Completion
Tools**



**Production
Enhancement**



**Artificial
Lift**



Multi-Chem

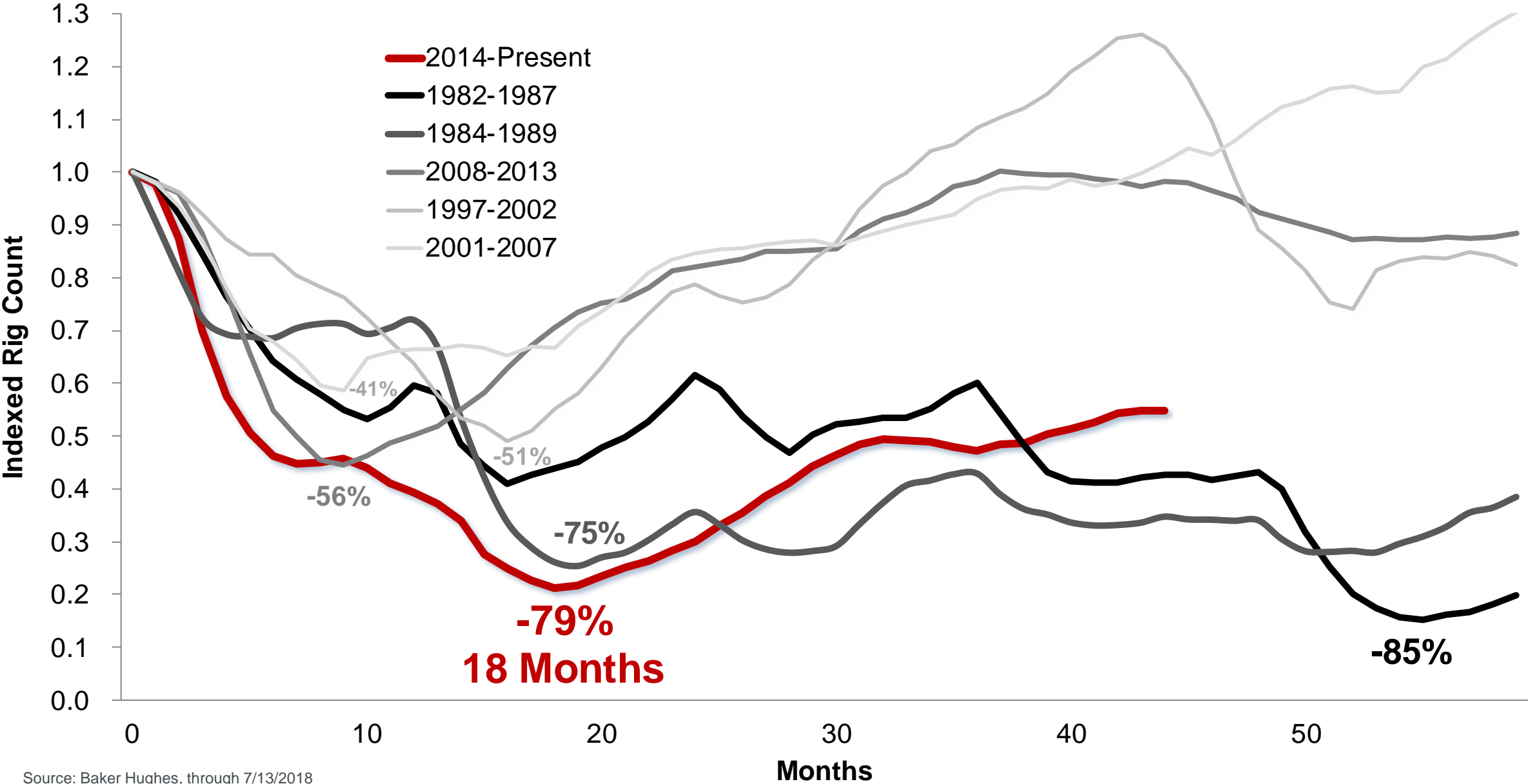


**Pipeline &
Process
Services**



**Production
Solutions**

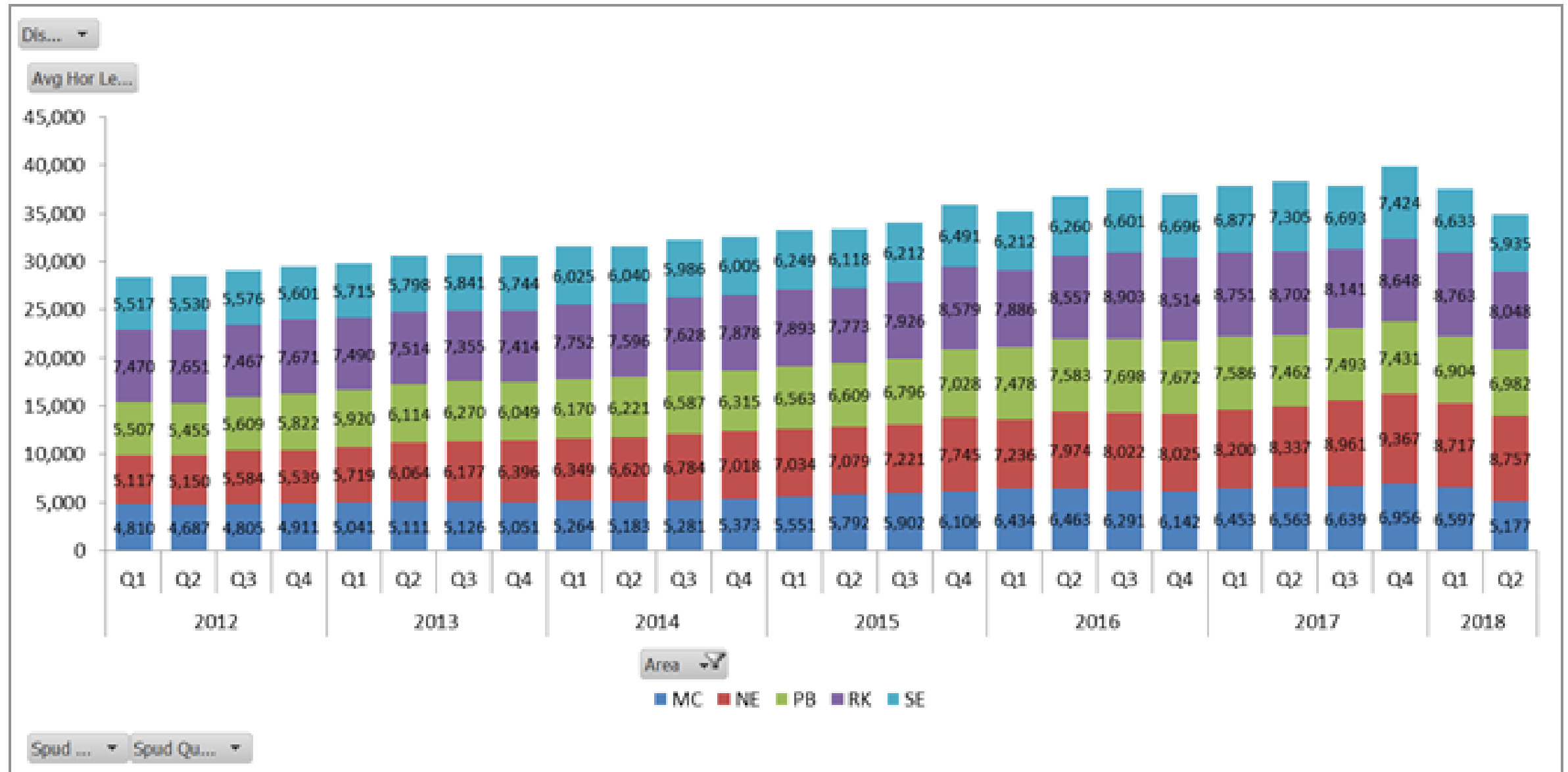
Comparison of U.S. Downturns (Monthly) – 5 Years After Peak



Source: Baker Hughes, through 7/13/2018

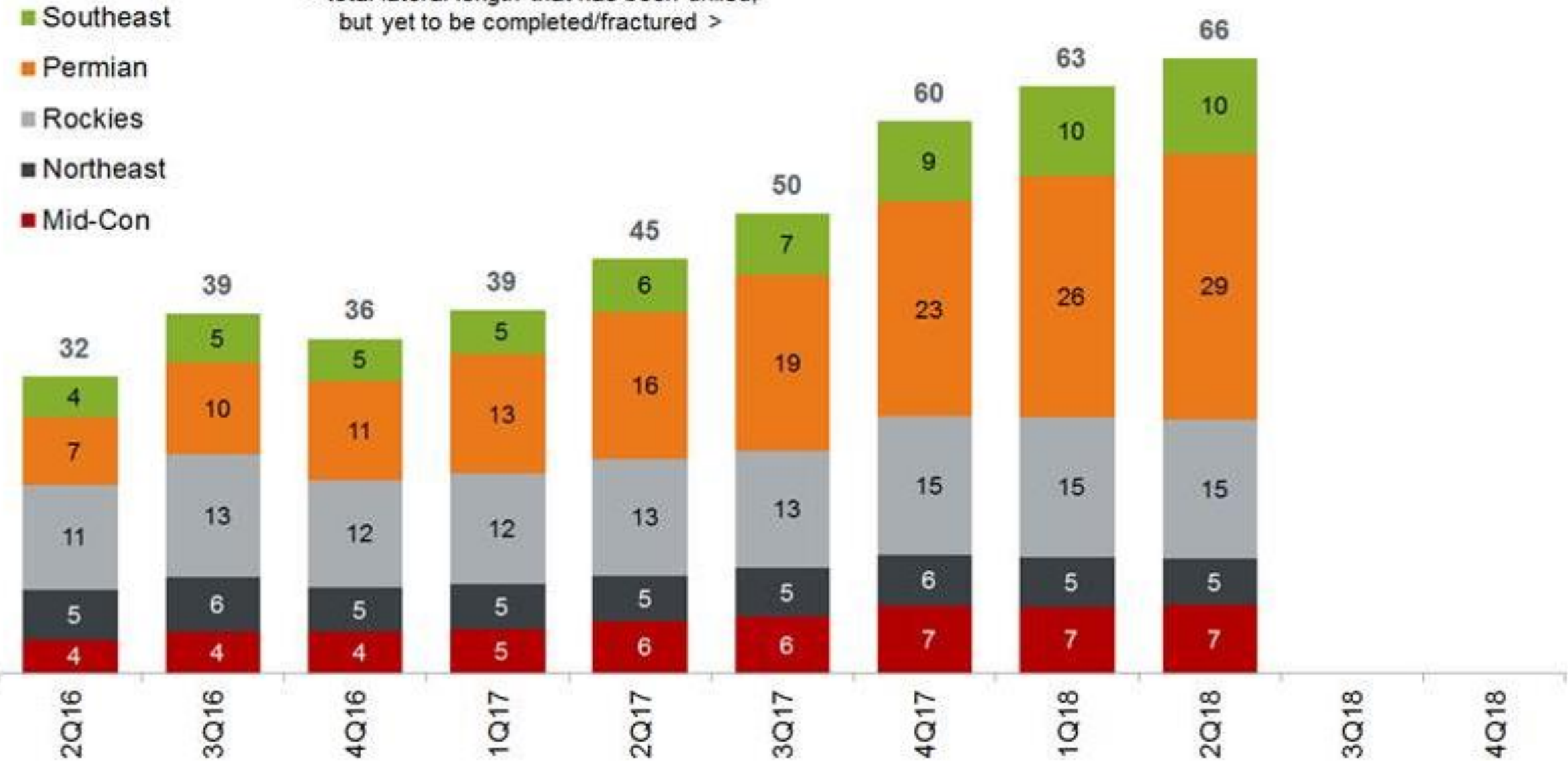
© 2018 Halliburton. All rights reserved.

Average Lateral Lengths



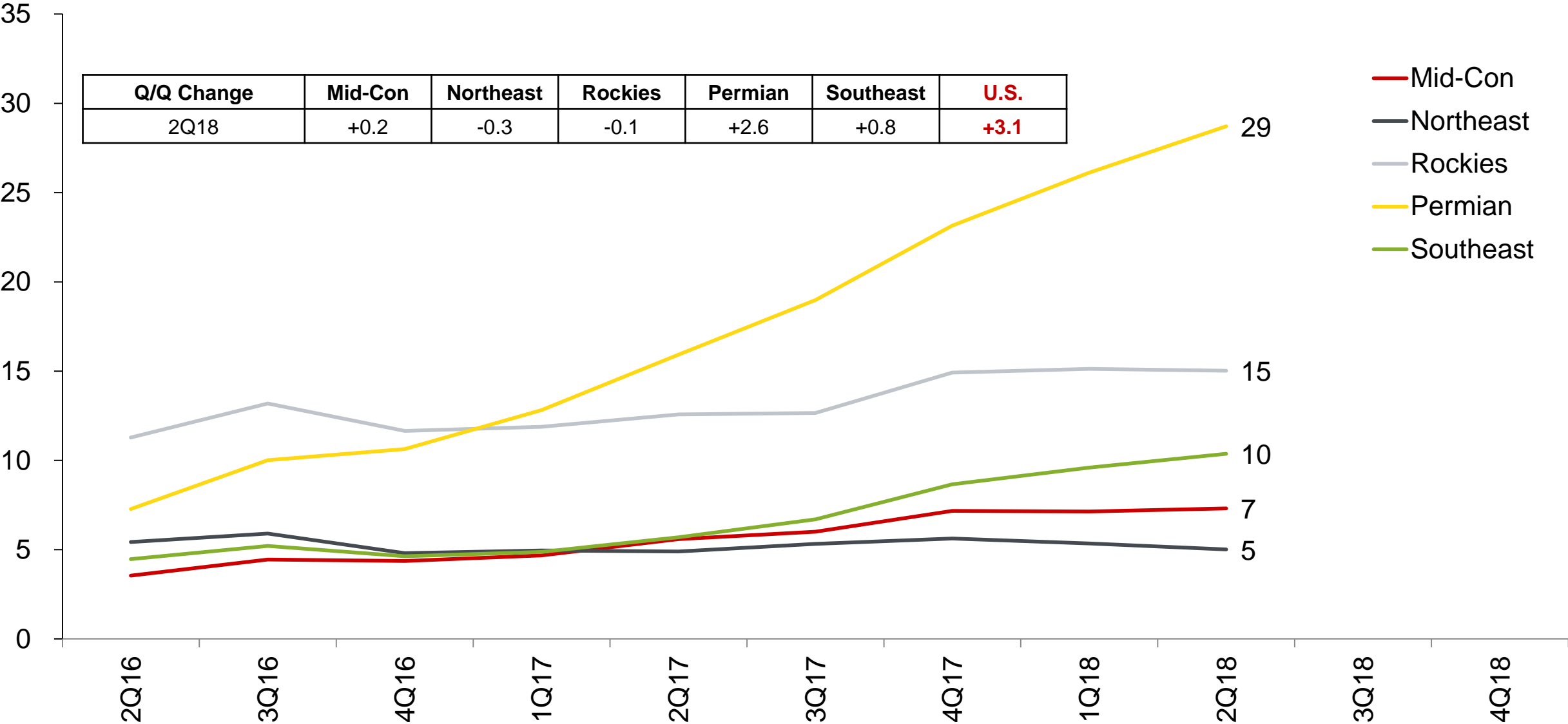
United States – Total DUC Feet (millions)

< total lateral length that has been drilled,
but yet to be completed/fractured >



United States – Total DUC Feet (millions)

< total lateral length that has been drilled, but yet to be completed/fracked >



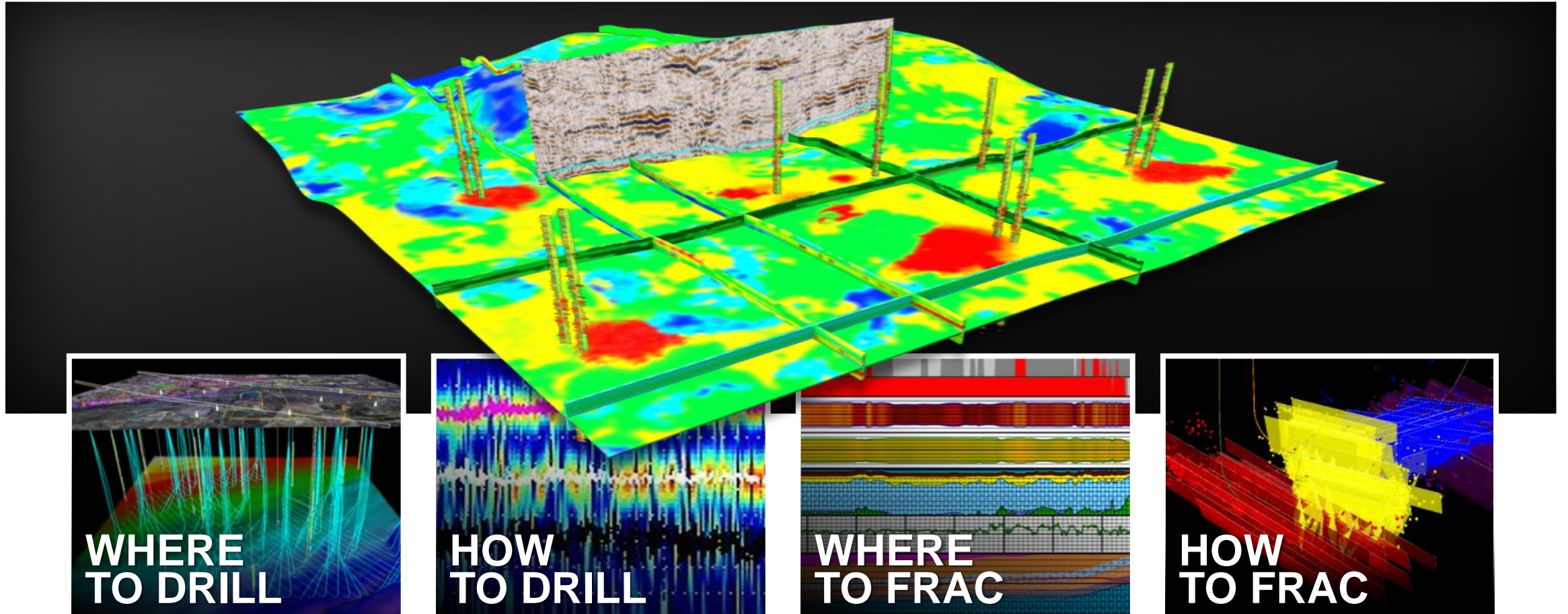
Source: Drilling Info (lateral length used to calculate DUC feet)

© 2018 Halliburton. All rights reserved.

Basin	Plays	Avg Lat.	Avg Stgs	Sand	HHP	Pad Drilling
Midland	Lower Sprayberry, Wolfcamp A, B, C & D, Cline	10,100	54	19M	30k	45%
Delaware	Avalon, Bone Spring 1, 2 & 4, Wolfcamp	8,500	44	20.4M	38k	60%
Eagle Ford	Eagle Ford, Austin Chalk, Eagle Bine	7,500	25-40	8-11M	40k	93%
DJ	Niobrara, Codell	7,500	40	12M	28k	99%
Williston	Bakken, Three Forks	10,000	35-50	10M	28k	95%
Marcellus	Lower & Upper Marcellus, Geneseo / Burkett	7,250	45	20.5M	28k	94%
Utica (OH)	Point Pleasant	10,000	50	23M	32k	90%
Anadarko	SCOOP/STACK, Cana, Woodford, Osage, Merge, Mississippi Lime, Barnett, Granite Wash	7,800	26	10M	34k	25%

Our Environment

dynamic choices



Frac Site Advances



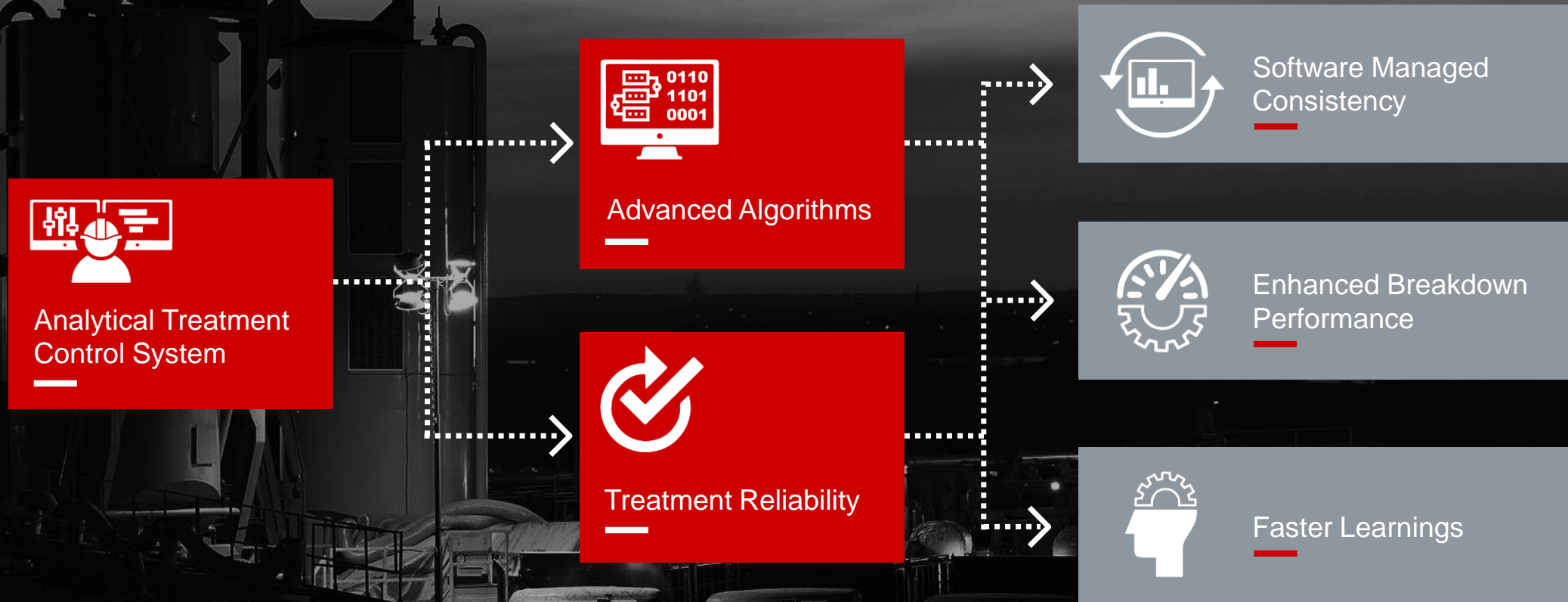
Frac Sight Advancement



Frac Site Advances



Prodigi™ Automated Service - Intelligent automated fracturing control system





Thank you